



**BODY-WORN  
CAMERA**

POLICY AND IMPLEMENTATION PROGRAM



**BJA**

# The Integration of BWC with Other Technology: Challenges and Lessons Learned

---

Geoffrey Smith, Senior Advisor, CNA

Elliot Harkavy, Senior Advisor, CAN, BWC TTA Technology Advisor

Chief Brian Ohlin, Division of Police, City of Brunswick, OH

Sgt. Thomas Naughton & Detective Michael Clinton, St. Louis County Police Department

This material was supported by Grant No. 2019-BC-BX-K001 awarded by the Bureau of Justice Assistance (BJA). BJA is a component of the U.S. Department of Justice Office of Justice Programs. Points of view or opinions contained herein do not necessarily represent the official position or policies of the U.S. Department of Justice.



**BODY-WORN  
CAMERA**

POLICY AND IMPLEMENTATION PROGRAM



**BJA**  
BUREAU OF JUSTICE ASSISTANCE  
U.S. DEPARTMENT OF JUSTICE

# The Integration of BWC with Other Technology: Challenges and Lessons Learned

---

Geoffrey Smith

Senior Advisor

CNA

This material was supported by Grant No. 2019-BC-BX-K001 awarded by the Bureau of Justice Assistance (BJA). BJA is a component of the U.S. Department of Justice Office of Justice Programs. Points of view or opinions contained herein do not necessarily represent the official position or policies of the U.S. Department of Justice.



**BODY-WORN  
CAMERA**

POLICY AND IMPLEMENTATION PROGRAM



**BJA**  
BUREAU OF JUSTICE ASSISTANCE  
U.S. DEPARTMENT OF JUSTICE

# The Integration of BWC with Other Technology: Challenges and Lessons Learned

---

Elliot Harkavy

Senior Advisor

CNA

BWC TTA Technology Advisor

This material was supported by Grant No. 2019-BC-BX-K001 awarded by the Bureau of Justice Assistance (BJA). BJA is a component of the U.S. Department of Justice Office of Justice Programs. Points of view or opinions contained herein do not necessarily represent the official position or policies of the U.S. Department of Justice.



# Types of BWC Integration

- Integration across agency systems
  - CAD/ RMS
  - Situational Awareness
  - Real Time Crime Centers
- Integration with agency functions
  - Training
  - Special Operations
  - Other Specialized functions
    - i.e., Transit, Airport, Courts, Schools, Traffic, Corrections, Service of Warrants/Court Orders, etc
- Integration across partners
  - Law Enforcement, Prosecutors, Courts, etc.
- Digital Evidence Integration
  - Compiling digital evidence across multiple sources for a unified view
    - i.e., Video, audio, photos, files, data, apps, websites, system dumps, etc.
  - Can include integration across systems, functions, partners and others.



**BODY-WORN  
CAMERA**

POLICY AND IMPLEMENTATION PROGRAM



**BJA**  
BUREAU OF JUSTICE ASSISTANCE  
U.S. DEPARTMENT OF JUSTICE

# The Integration of BWC with Other Technology: Challenges and Lessons Learned

---

Chief Brian Ohlin

Division of Police

City of Brunswick, OH

This material was supported by Grant No. 2019-BC-BX-K001 awarded by the Bureau of Justice Assistance (BJA). BJA is a component of the U.S. Department of Justice Office of Justice Programs. Points of view or opinions contained herein do not necessarily represent the official position or policies of the U.S. Department of Justice.



**BODY-WORN  
CAMERA**

POLICY AND IMPLEMENTATION PROGRAM



**BJA**  
BUREAU OF JUSTICE ASSISTANCE  
U.S. DEPARTMENT OF JUSTICE

# The Integration of BWC with Other Technology: Challenges and Lessons Learned

---

Sgt. Thomas Naughton & Detective Michael Clinton

St. Louis County Police Department

This material was supported by Grant No. 2019-BC-BX-K001 awarded by the Bureau of Justice Assistance (BJA). BJA is a component of the U.S. Department of Justice Office of Justice Programs. Points of view or opinions contained herein do not necessarily represent the official position or policies of the U.S. Department of Justice.

# St. Louis County Police Camera Program

- Contract signed August 2019
- In car systems installed October/November 2019 400+ vehicles
- Trained commissioned and professional staff 900+ December 2019
- Program mandatory and live by January 1<sup>st</sup> 2020 at 12:00am
- 248 Terabytes of data to date
- 4 ALPR systems currently in use with an additional 100 requested for expansion
- Partnership with eight other agencies and growing as system footprint expands in the region for mutual aid

# St. Louis County Police

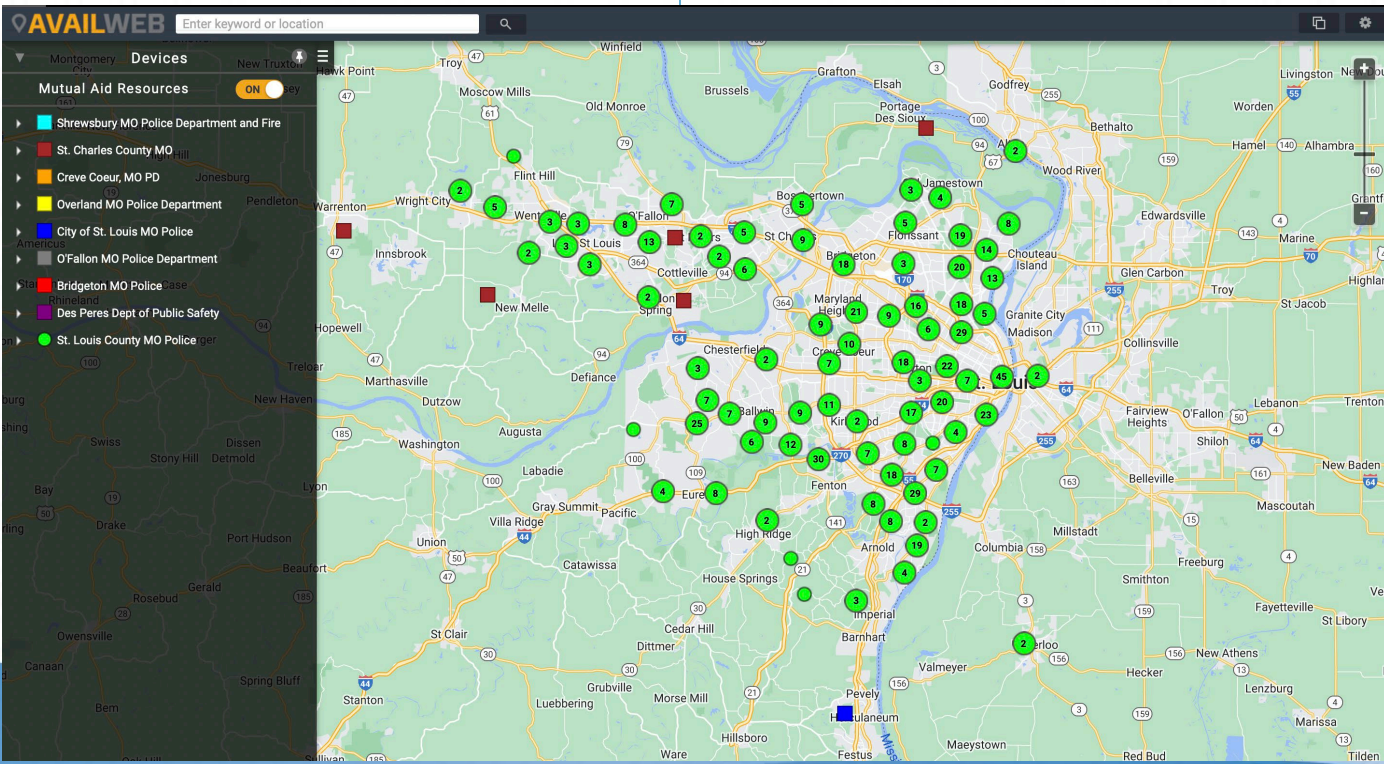




# Local Partnerships

- St. Louis County Police has partnerships with eight agencies allowing for real time live gps updates

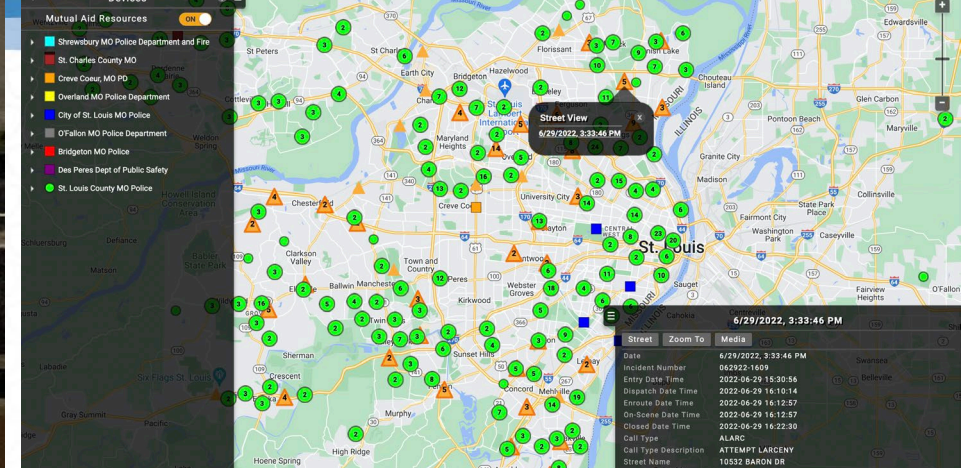
- Utilizing the approach of a regional asset instead of just a camera





Integration with Computer Aided Dispatch for automated recordings based on call types

- Geofencing/Action Zone ability for mass messaging, recordings, live streaming etc...





**BODY-WORN  
CAMERA**  
POLICY AND IMPLEMENTATION PROGRAM



**BJA**  
BUREAU OF JUSTICE ASSISTANCE  
U.S. DEPARTMENT OF JUSTICE

# Panel Discussion and Q&A